

February
13-15

Science with a Wide-field Infrared Telescope in Space

Dark Energy Theory: Why λ isn't enough

Michael S. Turner
Kavli Institute for Cosmological Physics
The University of Chicago



JPL



Goddard
SPACE FLIGHT CENTER

A visualization of cosmic acceleration, showing a central point from which numerous lines radiate outwards, representing the expansion of the universe. The lines are colored in shades of blue and yellow, and their lengths increase as they move away from the center, suggesting increasing velocity. Two bright, glowing spots are visible: one in the upper left and a larger one in the lower right, possibly representing distant galaxies or supernovae.

Why is Cosmic Acceleration /
Dark Energy Important?

DARK ENERGY

MAY BE THE MOST

PROFOUND PROBLEM

IN ALL OF SCIENCE TODAY



**Youbetcha
Katie, I believe
in Dark Energy –
we can see it
from Alaska!**

**Drill for
Dark Energy!**

A LOT AT STAKE!

COSMIC DESTINY
CAN'T UNDERSTAND

QUANTUM VACUUM ENERGY
WHY SO SMALL

INFLATION
RELATED?

NARCISSISTIC
PAINFUL

NEUTRINO MASS
SAME SCALE

WHAT IS
DARK ENERGY?

SUMMISE
???

COSMIC ACCELERATION

SUPER STRINGS
SOLUTION?

NEW GRAV =
PHYSICS
SELF ACCELERATION

SUPERSYMMETRY

SUSY \Rightarrow $\rho_{vac} = 0$
S \bar{S} Y \Rightarrow $\rho_{vac} \neq 0$

WHY NOW?

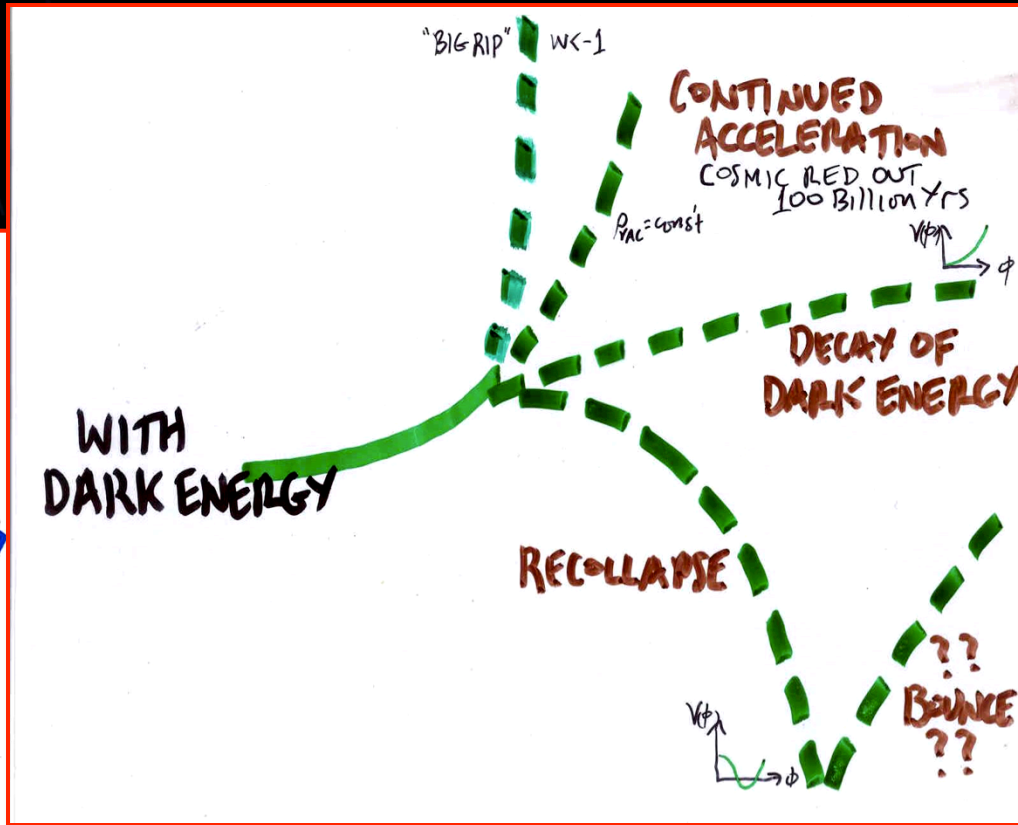
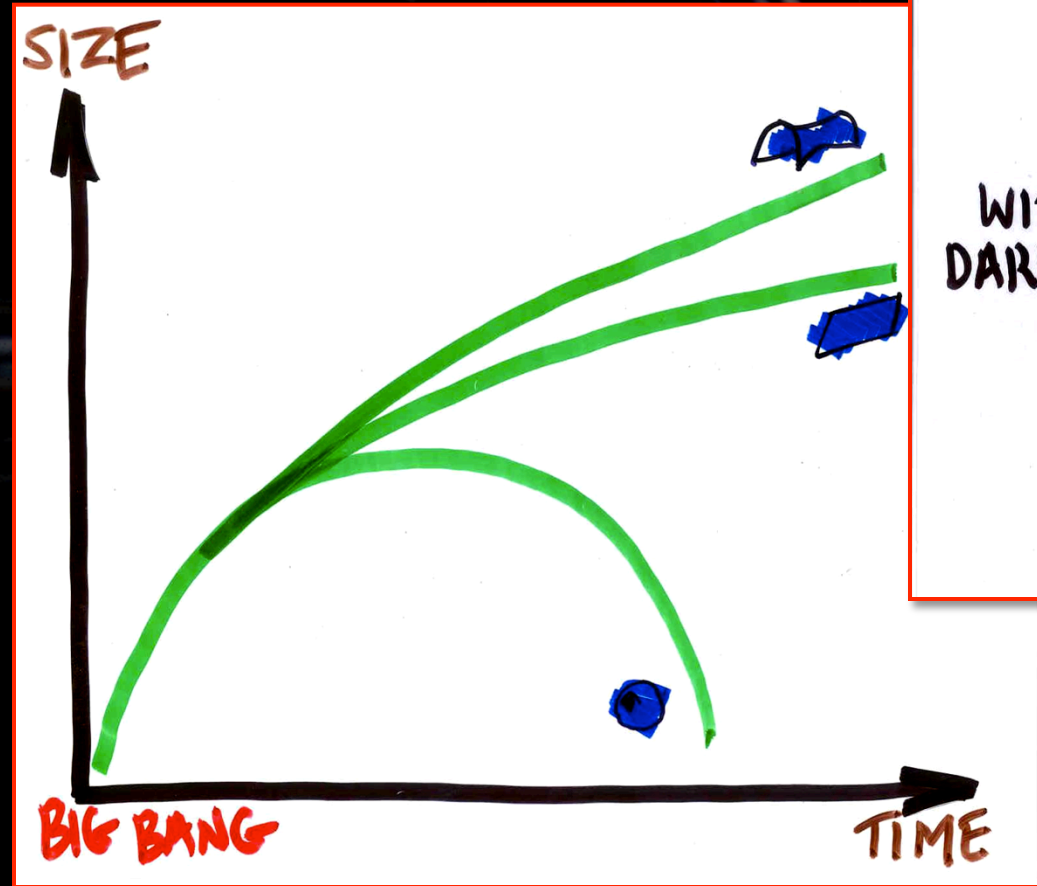
... SWEDISH GOLD OPPORTUNITIES

The Consensus Cosmology




Rests upon three mysterious pillars
All implicate new physics!

In the Presence of Dark Energy, a Flat Universe Can Expand Forever, Re-collapse, or Even Experience a Big Rip!



Cannot Understand Our Cosmic Destiny Until We Understand What Dark Energy Is!



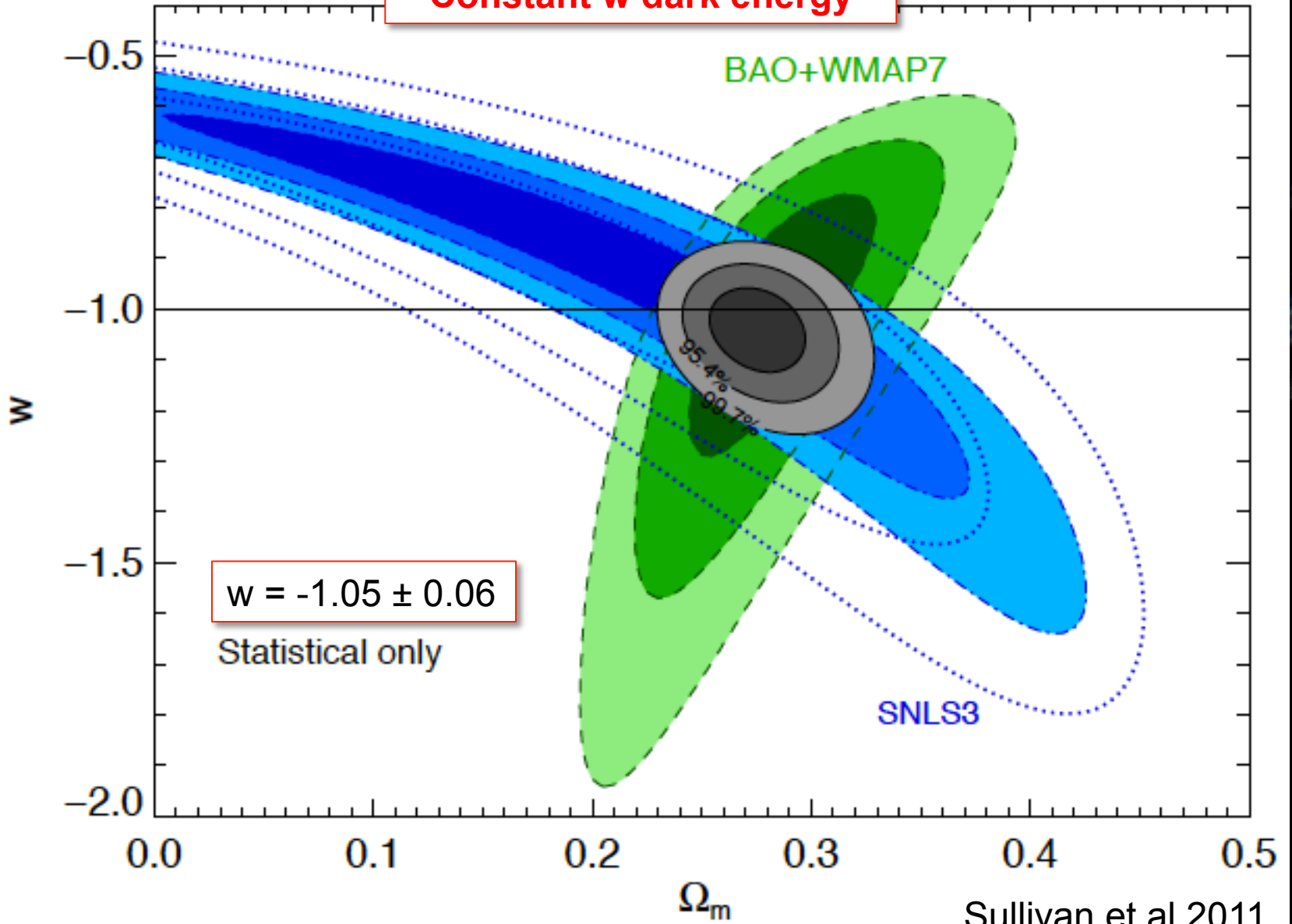
What do we know?
with increasing assumptions

Robertson-Walker metric, no
Friedmann equation,
 $q(z) = -d^2R/dt^2/RH^2$

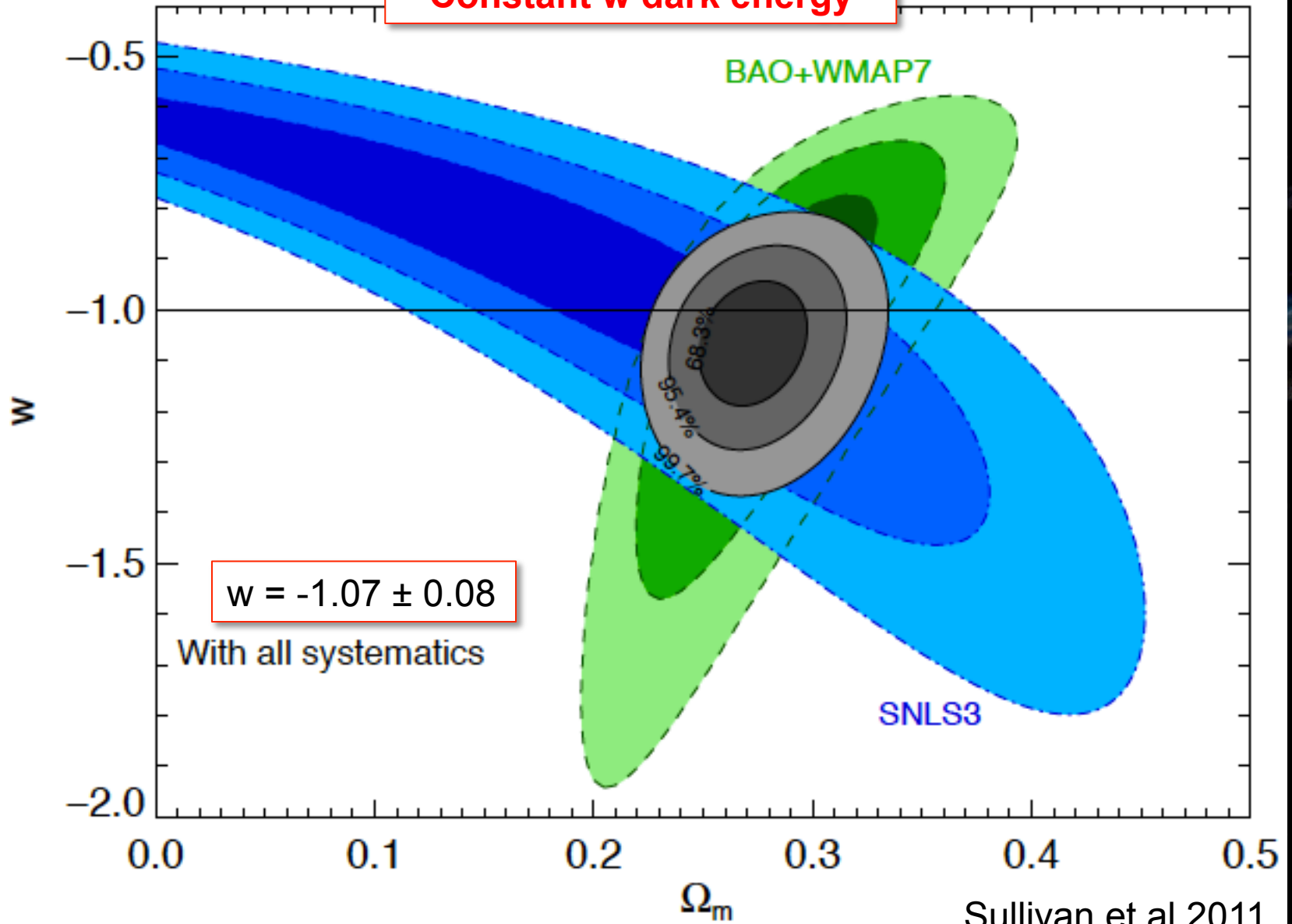
- Five-sigma evidence for a period with $q(z) < 0$ (acceleration)
- Three-sigma evidence for a period with $q(z) > 0$

C. Shapiro & M.S. Turner, Ap J 649, 543 (2006)

Constant w dark energy

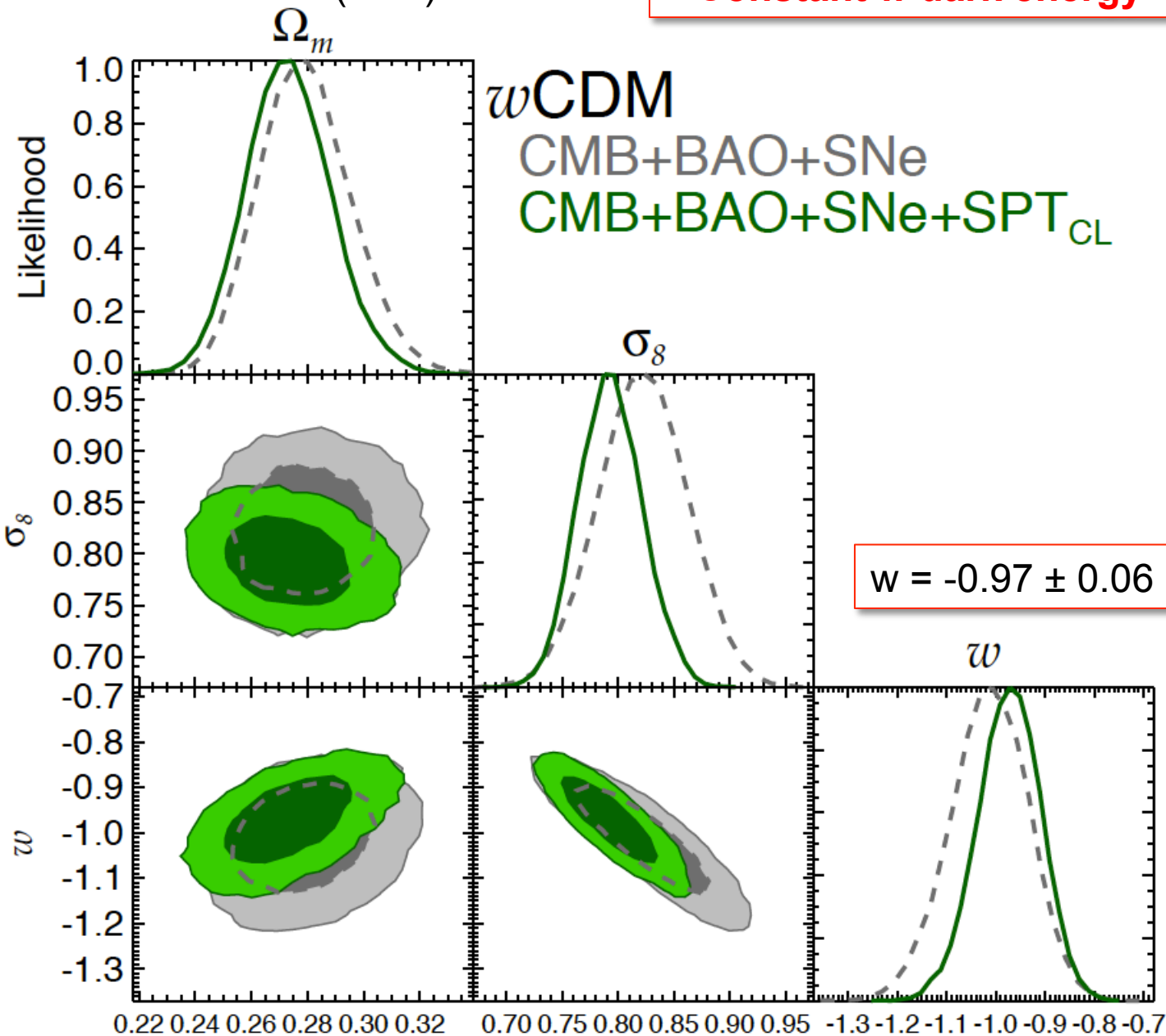


Constant w dark energy



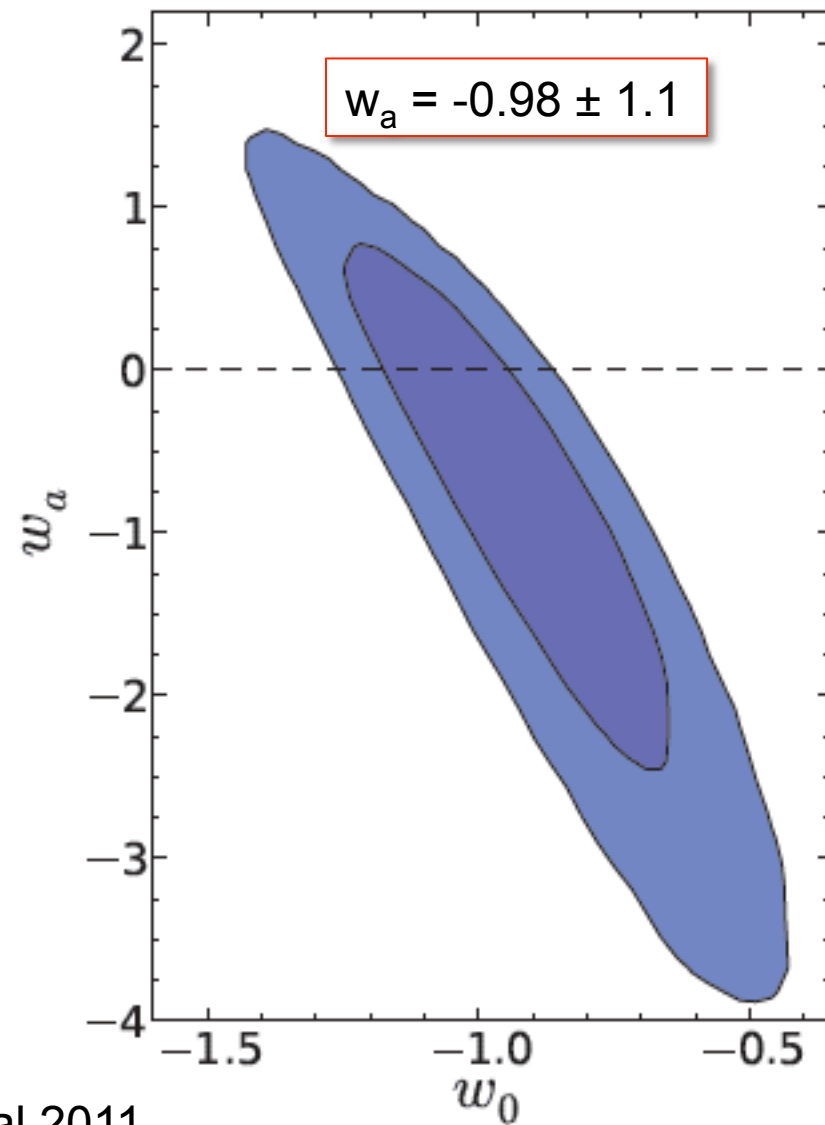
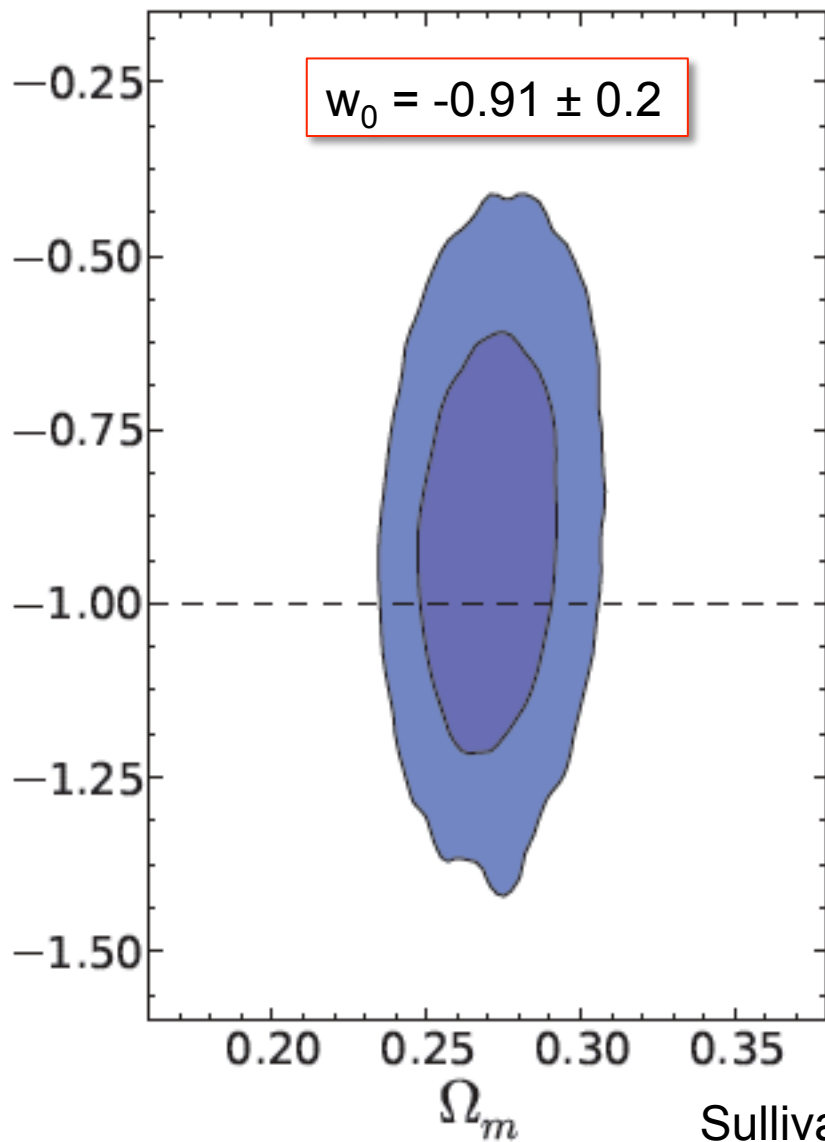
Benson et al 2011 (SPT)

Constant w dark energy

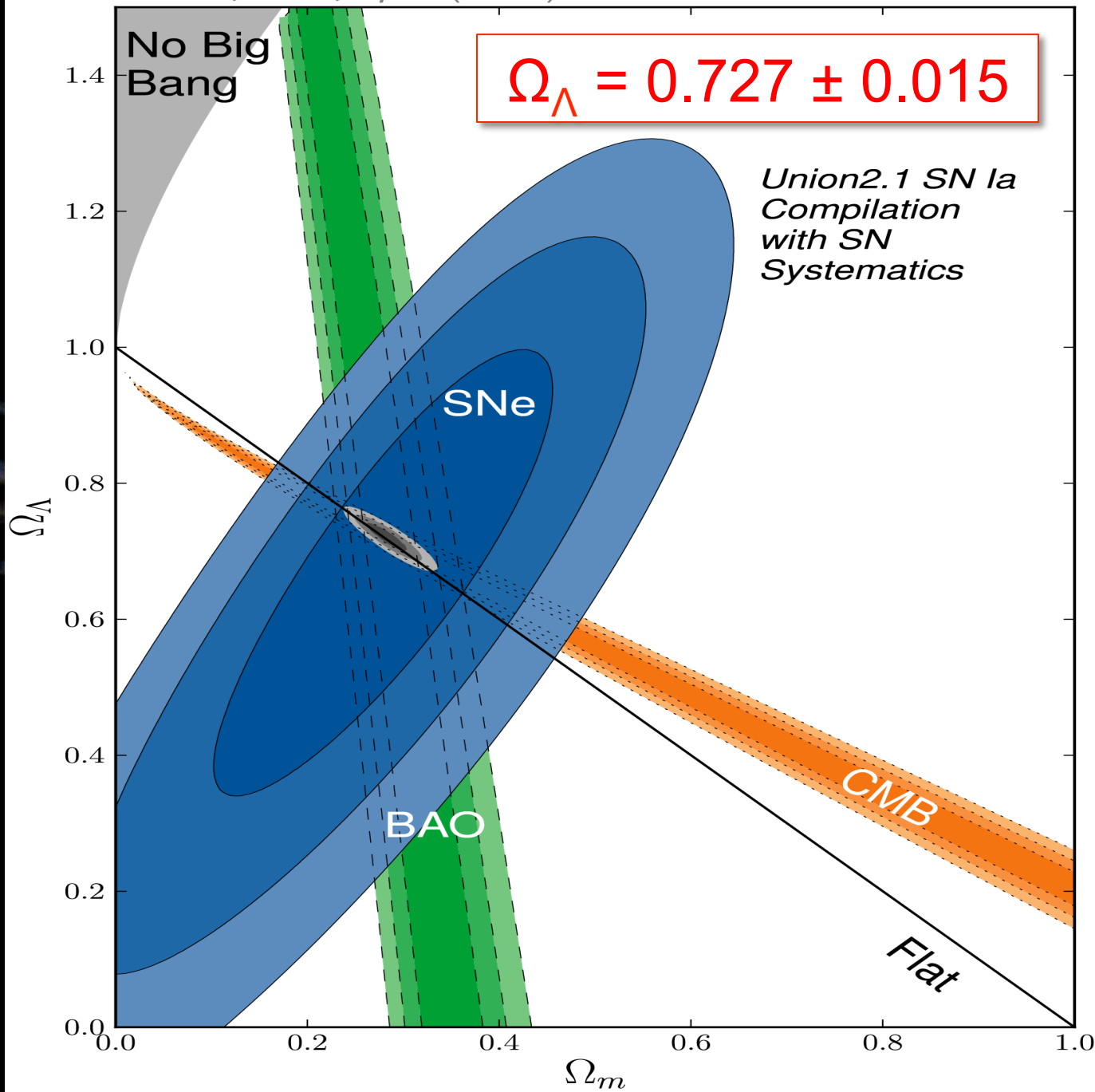


$$w = w_0 + w_a(1 - a)$$

SNLS3+SDSS DR7 LRGs+WMAP7+ H_0 (Flat)



Sullivan et al 2011

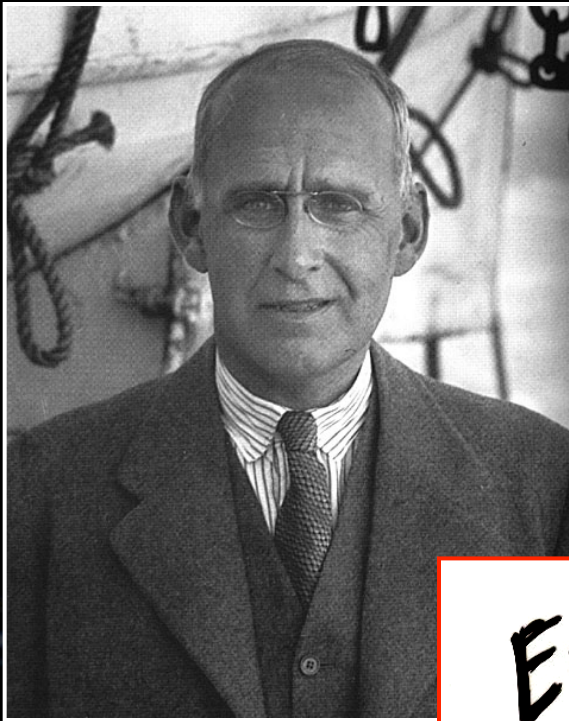


So, it's Lambda??!##





Why isn't lambda good enough?
Short answer: no good theory for it!



EDDINGTON:

"NO EXPERIMENTAL RESULT
SHOULD BE ACCEPTED UNTIL
CONFIRMED BY THEORY"

$$G + \Lambda = 8\pi T$$

Geometry Matter

Einstein added
optional Λ

$$\Lambda \leftrightarrow T_{\text{vacuum}}$$

QM vacuum energy
problem known
since 1930s (Pauli),

T_{vac} not optional!

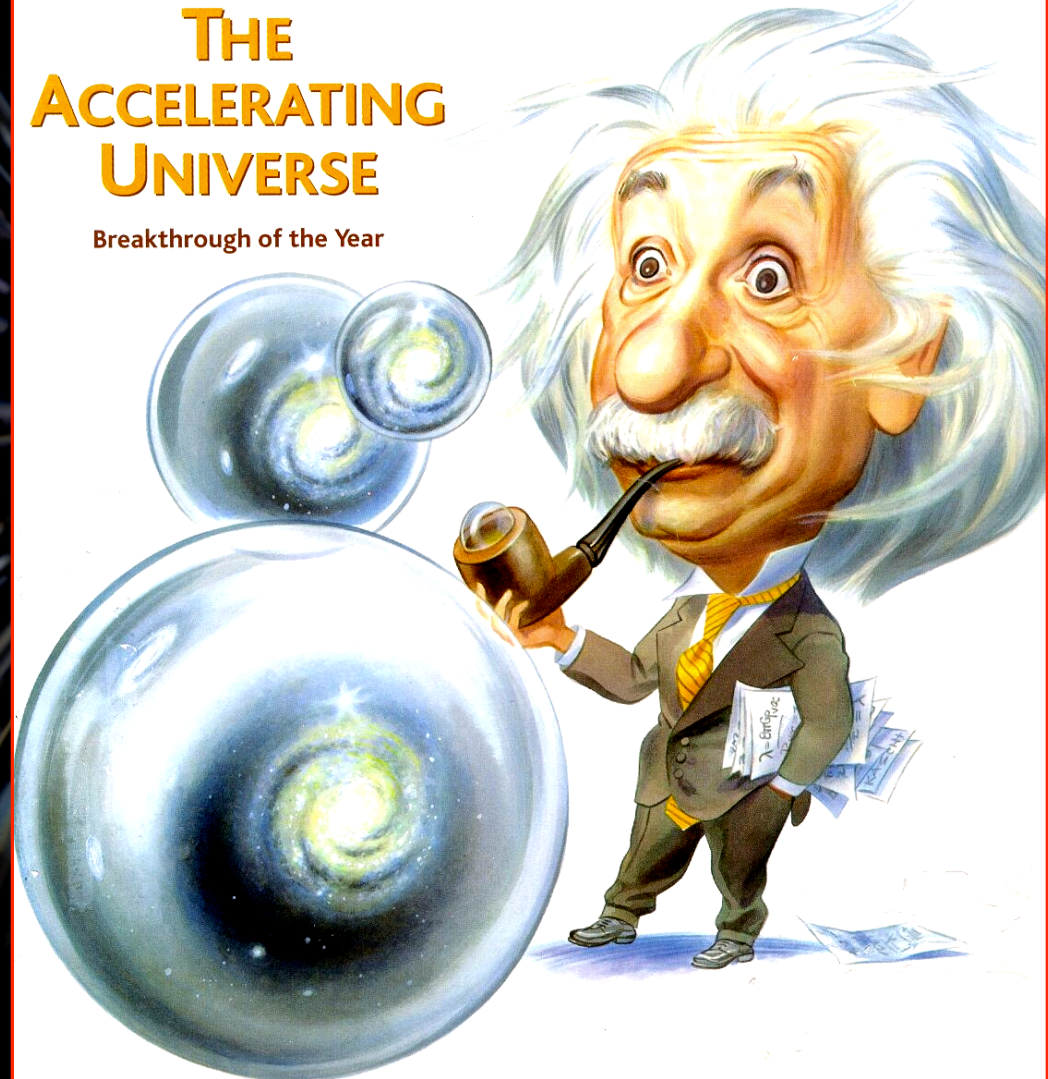
Science

18 December 1998

Vol. 282 No. 5397
Pages 2141-2336 \$7

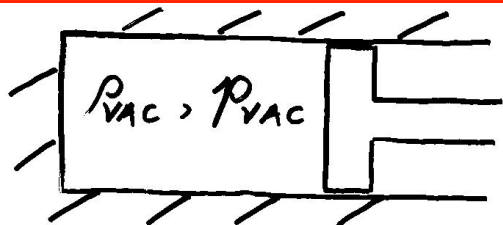
THE ACCELERATING UNIVERSE

Breakthrough of the Year



AMERICAN ASSOCIATION FOR THE ADVANCEMENT OF SCIENCE

The Gravity of Nothing Is Repulsive



$$dE = -p dV \quad (\text{First Law})$$

$$P_{VAC} dV = -P_{VAC} dV \Rightarrow \underline{P_{VAC} = -P_{VAC}}$$

$$T_{VAC}^{\mu\nu} = P_{VAC} g^{\mu\nu}$$

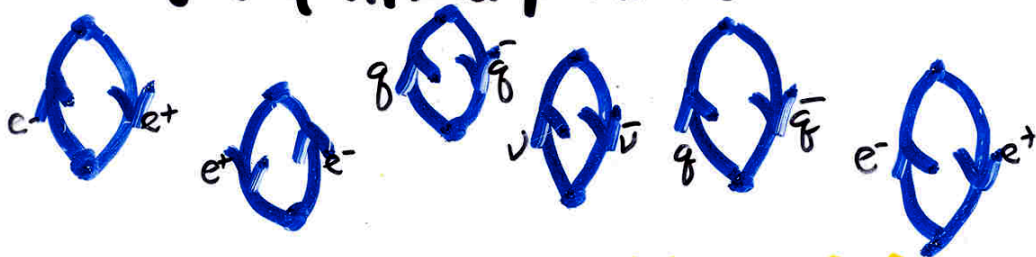
(same as Λ)

finite answer that is off by order of magnitude

$$\rho_{vac} \approx 3 \times 10^{-11} \text{ eV}^4$$

QUANTUM VACUUM IS NOT EMPTY!

sea of virtual particles



whose existence has been detected (shifting of atomic levels in H)

W. LAMB, Nobel Prize '55

Quantum vacuum is elastic (p = -p)

& its Gravity is ^{VERY} Repulsive! (p + 3p = -2p)

JUST WHAT IS NEEDED -- BUT...

THEORETICAL ESTIMATES OF AMOUNT

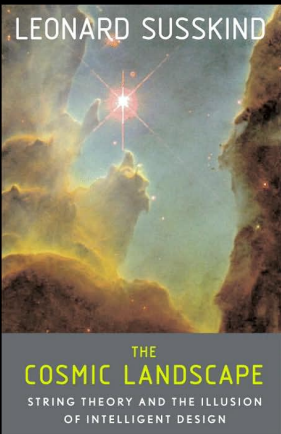
$$\rho_{\text{zero pt}} = \frac{1}{2} \int_0^\infty \sqrt{k^2 + m^2} \frac{d^3 k}{(2\pi)^3} = \frac{1}{16\pi^2} k_{\text{max}}^4$$

$$\rho_{\text{zero pt}} < \rho_{\text{crit}} \Rightarrow k_{\text{max}} < 0.03 \text{ eV}$$

Vacuum Energy and Supersymmetry

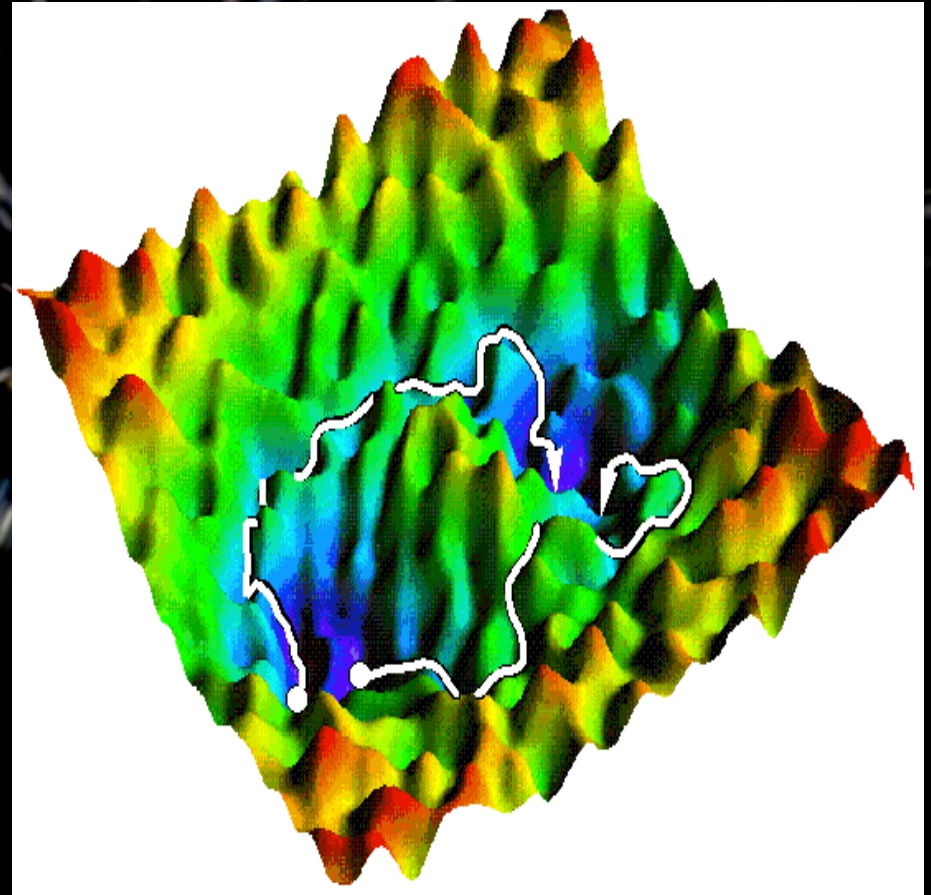


- SUSY \rightarrow quantum vacuum energy = 0
- Our world is not supersymmetric
- Broken SUSY $\rightarrow \rho_{\text{vac}} \sim O(M_{\text{SUSY}}^4)$
- NB: don't know if SUSY is broken or how?
- C. Burgess (PI): mm-size extra dimensions?



The Cosmic Landscape of Superstring Theory

- M-theory $\rightarrow 10^{500}$ vacua
- $\rho_{\text{vac}} \sim O(m_{\text{Pl}}^4) \pm O(m_{\text{Pl}}^4)$
- Universe has a multiverse structure & we were lucky (narcissistic principle)
- Testable??
- Extravagant solution!



Now we have two puzzles:

Why does nothing weighs so little?

&

What is dark energy?

Puzzles could be related or unrelated!

SOLVING THE
COSMIC ACCELERATION
RIDDLE WILL REQUIRE
A CRAZY, NEW IDEA!

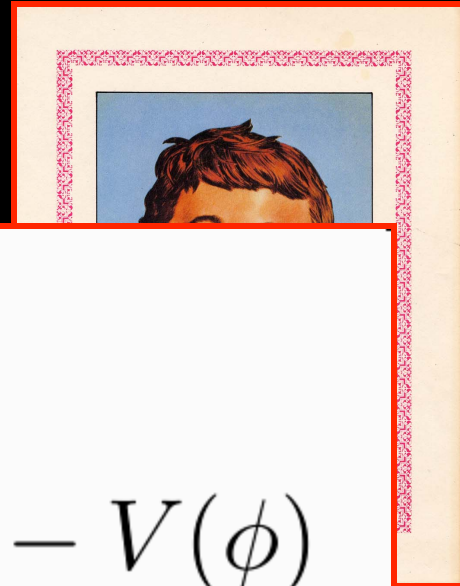
NB: NOT EVERY CRAZY IDEA IS A
SOLUTION TO A PROFOUND
PROBLEM!

The theory menu

- Vacuum energy (see above)
- Rolling scalar field
(quintessence)
- Very elastic topological defects
- Modified gravity
- Dark energy/dark matter
models
- Hole in the Universe
- ??

ROLLING SCALAR FIELD

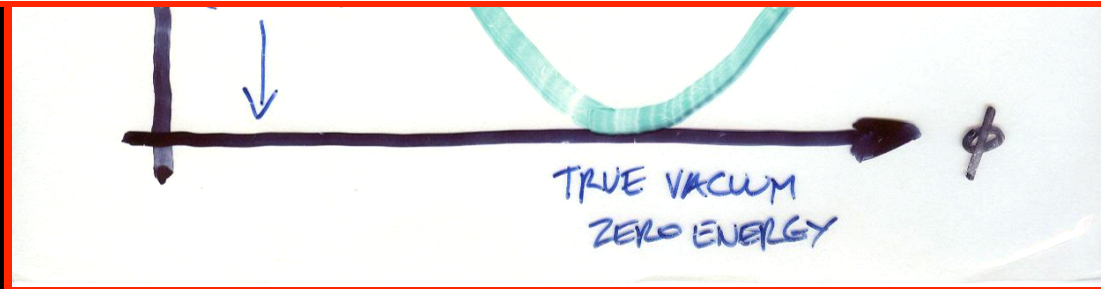
(aka: decaying cosmological constant,
pseudo Nambu Goldstone boson, quintessence,
not there yet)



$$\ddot{\phi} + 3H\dot{\phi} + V'(\phi) = 0$$

$$\rho = \frac{1}{2}\dot{\phi}^2 + V(\phi) \quad p = \frac{1}{2}\dot{\phi}^2 - V(\phi)$$

$$w = \frac{-V(\phi)}{+V(\phi)} \approx -1$$



NETWORK OF (FRUSTRATED) TOPOLOGICAL DEFECTS

EG STRING

A. Vilenkin '84
Pen-Spazgel '93



VERY ELASTIC: $\tau = -\rho/3$

IN GENERAL: $\tau = -N/3 \rho$

NO DARK ENERGY
NEW ASPECT OF GRAVITY

→ "EMPTY" UNIVERSE
UNDERGOES ACCELERATED
EXPANSION!

AVERAGE MATTER DENSITY TODAY $\approx 10^{-29}$ g/cm³
 $\approx 10^{-100} \times$ DENSITY AFTER INFLATION

NEW GRAVITATIONAL PHYSICS

BECAUSE GR DOES NOT MARRY QM & GRAVITY EXPECT A THEORY BEYOND EINSTEIN'S

BUT ... ALSO EXPECT NEW GRAV PHYSICS TO APPEAR AT SHORT DISTANCES



SURPRISE?

INFLUENCE OF EXTRA DIMENSIONS

DEFFAYER, DVARCI & GABADADZE

$$H^2 = \frac{8\pi G \rho_M}{3} + \frac{H^2}{r_c^2}$$

$$r_c \sim H_0^{-1} \sim 10^{28} \text{ cm}$$

SMALL CORRECTION TO GR

DUVVUM,
CANNAL,
THODDEN, MST

$$S = \frac{1}{16\pi G} \int d^4x T_{\mu\nu} (R - \mu^4/R)$$

$$\mu \sim H_0$$

“Old Gravitational Physics” hitherto undiscovered aspects of GR

Hole in the Center of the Universe

Bondi-Tolman (spherically symmetric solⁿ)

- Primordial inhomogeneity explains why the universe is accelerating today, E.W. Kolb, S. Matarrese, A. Notari, A. Riotto (astro-ph/0506534)
- On cosmic acceleration without dark energy, E.W. Kolb, S. Matarrese, A. Riotto (astro-ph/0506534)
- Comment on Backreaction and Cosmic Acceleration, E. Kolb, S. Matarrese, A. Riotto (astro-ph/0511073)
- Cosmological background solution with cosmological backreactions, E. Kolb, V. Marra, S. Matarrese, (arXiv: 0901.4566)

the Birthers



Dedicated to the rebirth of our Constitutional Republic

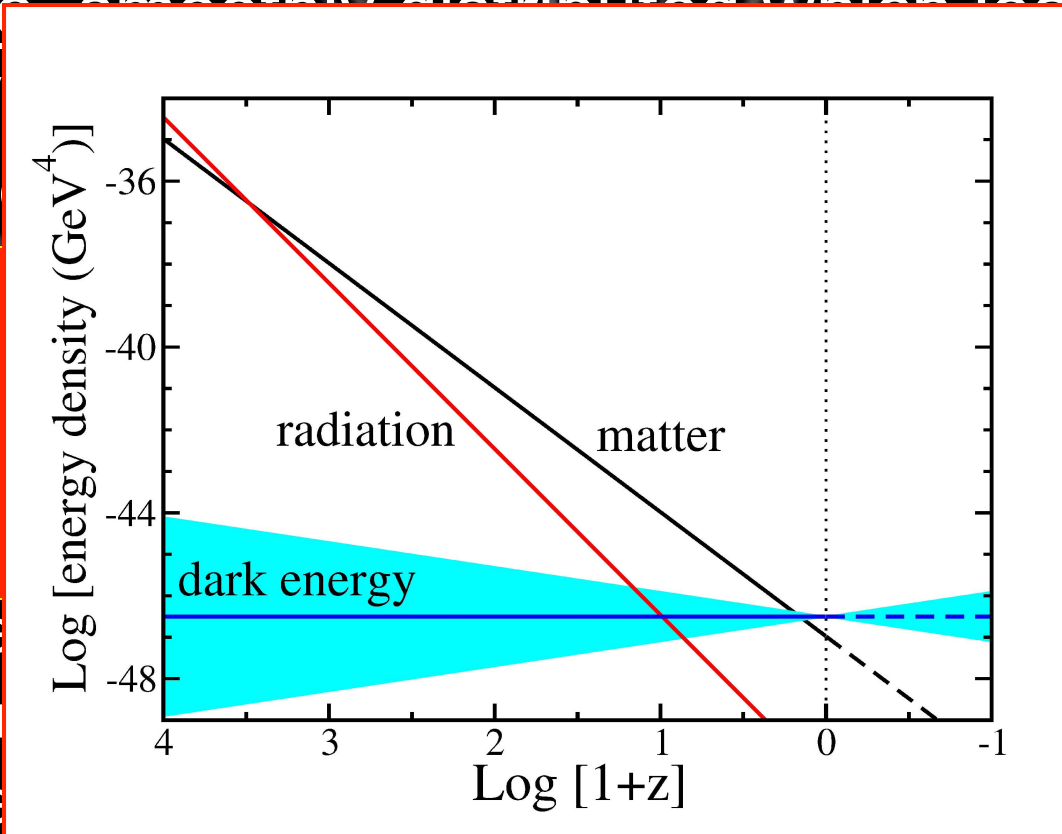
URBAN
DICTIONARY

Birther: *A conspiracy theorist who believes that Barack Obama is ineligible for the Presidency of the United States, based on any number of claims related to his place of birth, birth certificate, favorite birthday, or whether or not he has heard the song Africa by Toto. Birthers also believe cosmic acceleration is part of the very same conspiracy.*

Generic description

- Defining feature of dark energy: large negative pressure smoothly distributed which leads to repulsive gravity

- Describe



w

ty

1. Not ne
2. Vacuu
3. Quinte
4. Ghostly quintessence $w < -1$ (ρ_{DE} increases with time)
5. $w = w_0 + w_a(1 - a)$



Moving forward: looking for clues

“Breaking lambda”

WFIRST

- $w \neq -1$ (Q, MG, TD)
- $w_a \neq 0$ (Q, MG)
- “Early dark energy” (Q, MG)
- Growth of structure (MG)
- Gravitational lensing (MG)

Elsewhere

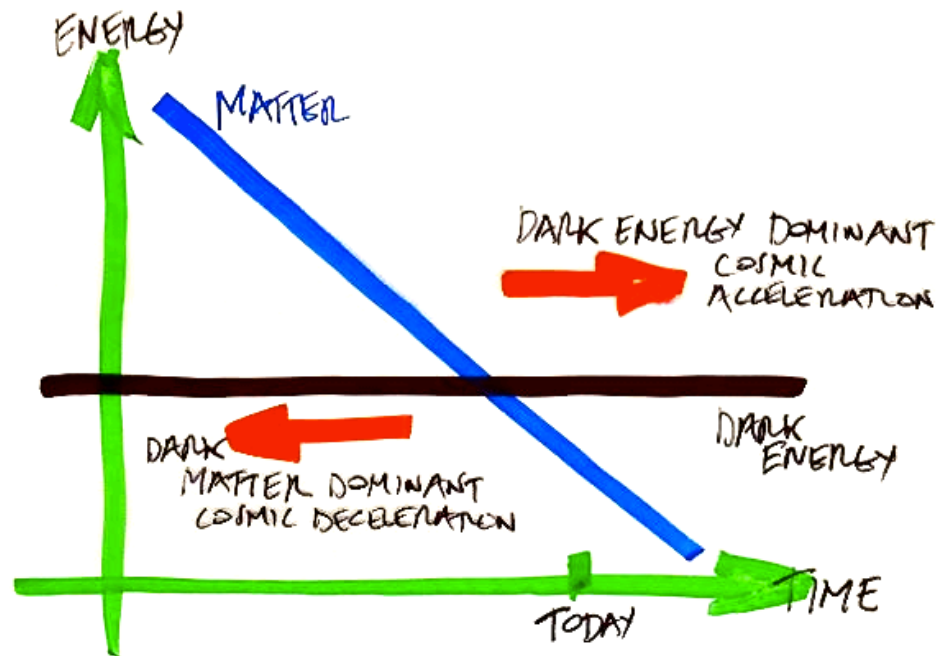
- Solar system anomaly (MG)
- New long-range force (MG, Q)
- Clustering dark energy (Q)
- Dark matter/dark energy coupling (Q, MG)
- SZ kinetic (Hole in U)

Q = quintessence, MG = modified gravity, TD = topological defect

Important
clue or
coincidence?

At the very
least, we can
now say that
cosmology
is the battle
between two
dark titans

NANCY KERRIGAN ASKED:
WHY ME?
WHY NOW?



**WHY THE SWITCH OVER
JUST WHEN WE ARRIVED?**

Dark energy/cosmic acceleration is a big deal

Pillar of the consensus cosmology

Controls destiny of the Universe

Involves an age-old problem

New physics (dark energy)

New gravity?

**Could be ours to solve, or
a problem for the 22nd century discovered
by accident in the 20th century**